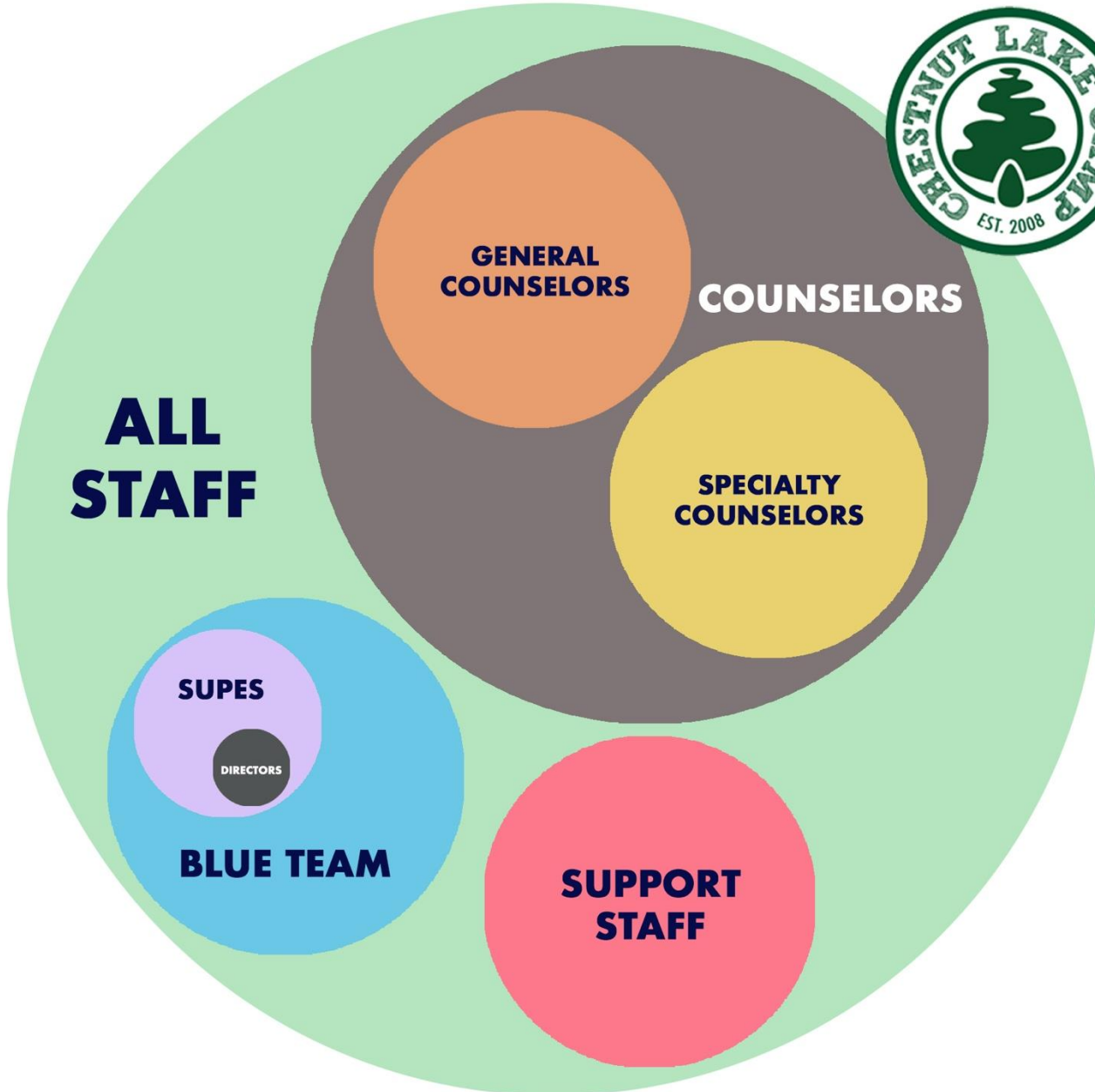


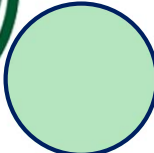
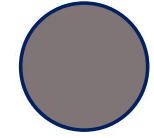


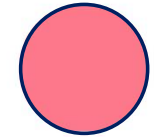
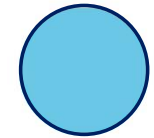



Staff Cohorts

The Basics CLC STAFF COHORTS

SUMMER 2026



-  **ALL STAFF** (Approx. 230 people)
Counselor Team (General/Specialist), Support Team, Blue Team (Supes)
-  **COUNSELORS** (130 people)
General Counselors (including Junior Counselors), Specialty Counselors
-  **GENERAL COUNSELORS** (60 people)
Including Junior Counselors (Rising 12th-Graders)
-  **SPECIALTY COUNSELORS** (70 people)
-  **SUPPORT STAFF** (35 people)
Food Service, Housekeeping, Maintenance
-  **BLUE TEAM** (70 people)
Supes (see below), Medical Team, Wellness Team, Office Staff, Operations, Transportation, Program/Experience Team
-  **SUPES** (50 people)
Directors, Campus Leaders (Asst. Directors, Division Leaders, Campus DLs), Program Leaders (Prog. Directors, Area Leaders), Other Supervisors
-  **DIRECTORS** (10 people)
Directors, Asst. Directors, Dir. of Staff/Camper Exp., Engage. Dir., Prog. Dir., Office Mgr., Operations Dir.